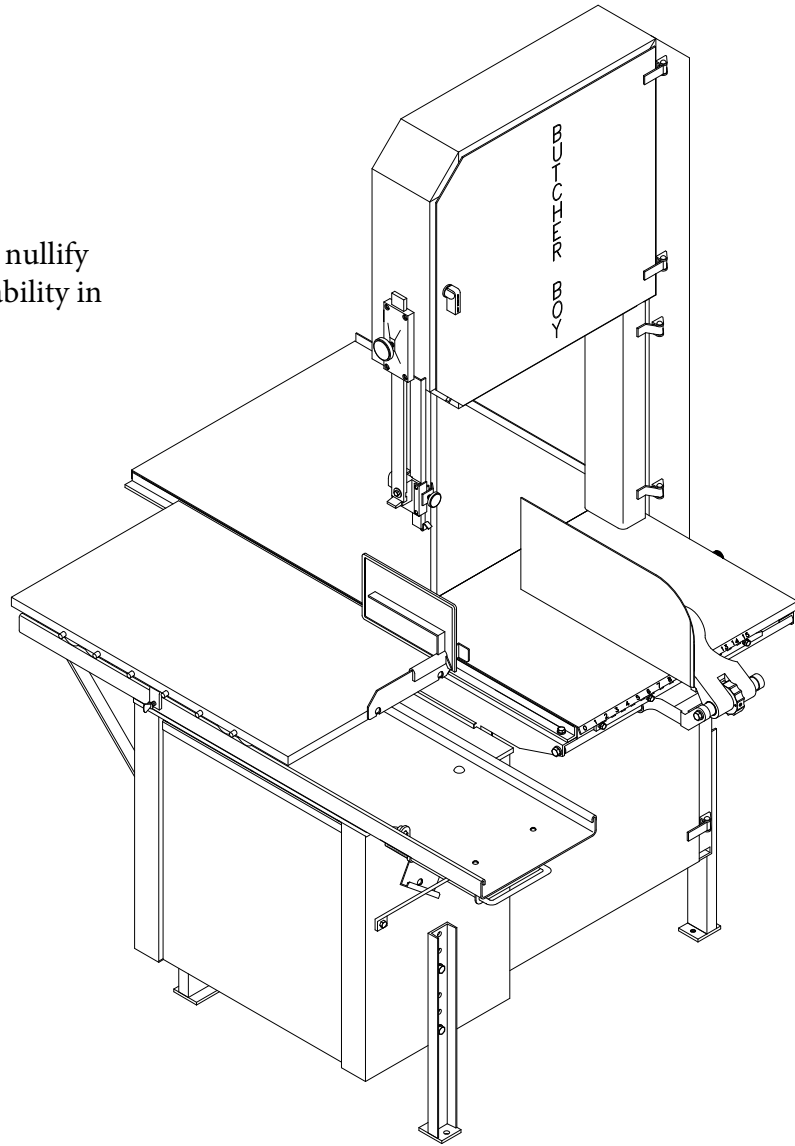


PARTS MANUAL FOR "BUTCHER BOY"
MODEL SA20 ELECTRIC MEAT, FISH AND BONE SAW
S/N 99010003 TO 99100018
AND S/N 00J0049 - ON

Modifying the machine will nullify
any and all manufactures liability in
regards to machines safety.



SA20 SAW
R/H - SHOWN
L/H - OPPOSITE

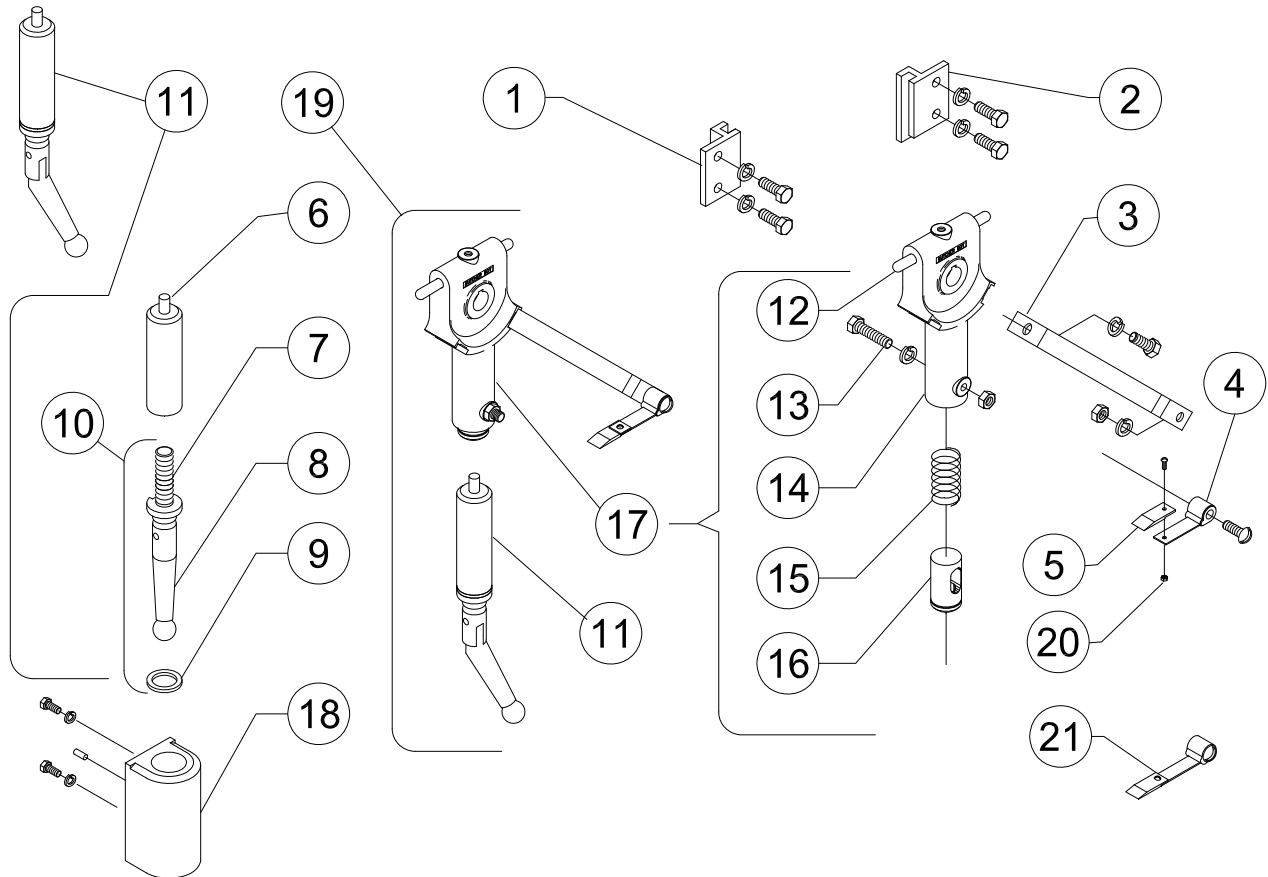
American Meat Equipment LLC.
640 Mulberry Ave
Selmer, TN. 38375
(731) 434-1012

"BUTCHER BOY" SA20 BAND SAW PART MANUAL

(MANUFACTURED BY AMERICAN MEAT EQUIPMENT LLC.)

S/N 99010003 TO 99010018 & S/N 00J0049 - ON

UPPER WHEEL TENSION ASSY RH & LH (RH SHOWN)



ITEM	PART#	DESCRIPTION	QTY
1	0010283	UPPER GUIDE BLOCK LH	1
2	0010282	UPPER GUIDE BLOCK RH	1
3	0020902	SCRAPER ARM	1
4	0010277	WHEEL SCRAPER SPRING ASSY	1
5	0020035	SCRAPER	1
6	0020655	SPINDLE SLEEVE ASSY	1
7	0020652	TENSION GAUGE SPINDLE	1
8	0016090	TENSION HANDLE	1
9	0020258	THRUST WASHER	1
10	0020653	TENSION GA. HANDLE & SPINDLE ASSY	1
11	0020656	TENSION GA. HANDLE ASSY W/ SLEEVE	1
12	0016034	TENSION GAUGE PIN	1

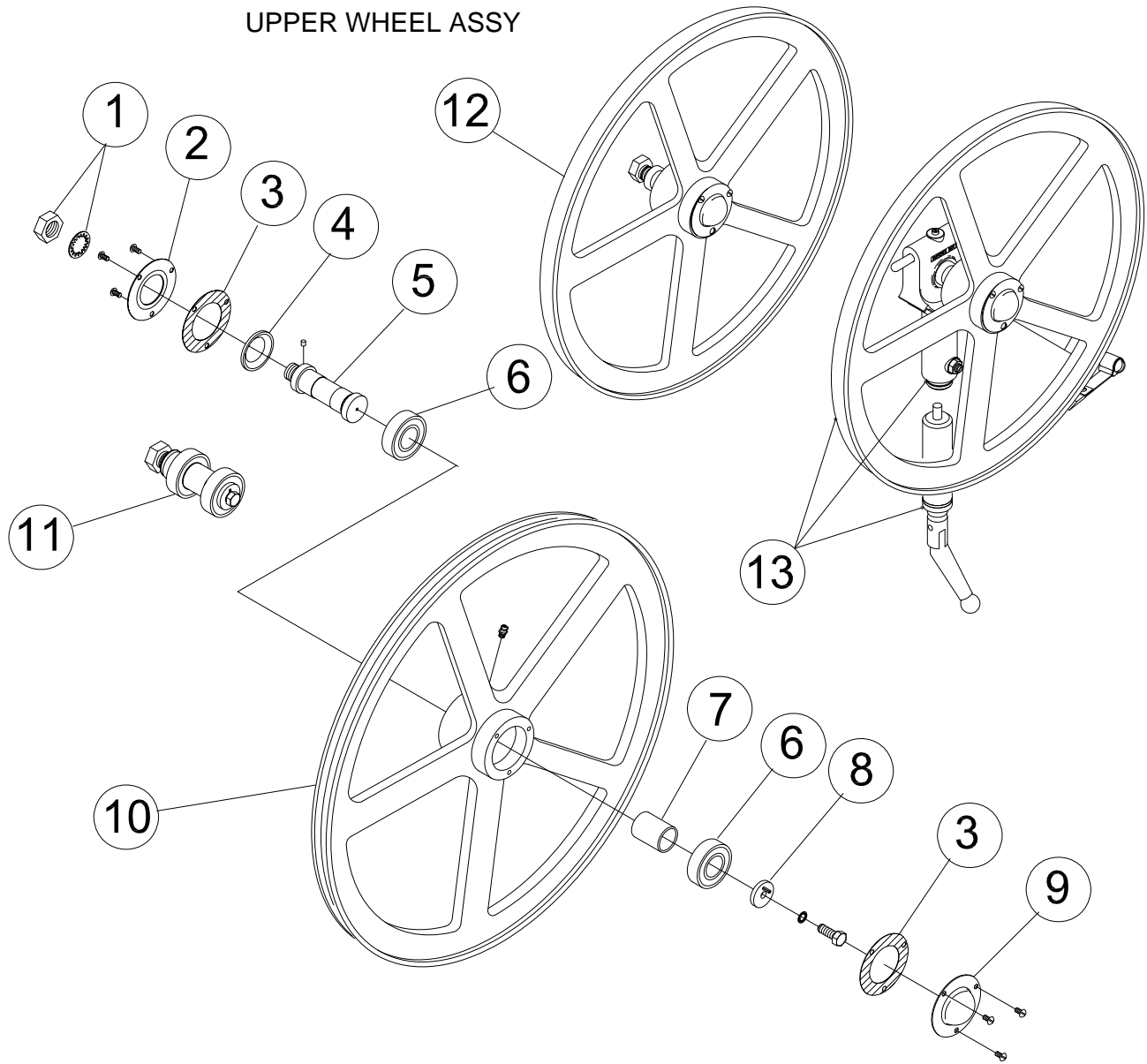
ITEM	PART#	DESCRIPTION	QTY
13	0016035	WHEEL ADJ. SCREW & NUT	1
14	0010730	UPPER WHEEL HANGER RH	1
14	0010731	UPPER WHEEL HANGER LH	1
15	0010082	SPRING	1
16	0010056	TENSION GA. INDICATOR	1
17	0020540	RH BLADE TENSION ASSY	1
17	0020541	LH BLADE TENSION ASSY	1
18	0020649	TENSION SPINDLE GUIDE ASSY	1
19	0020673	UPPER WHEEL HANGER ASSY LH	1
19	0020674	UPPER WHEEL HANGER ASSY RH	1
20	0010778	SCREW & NUT ASSY	1
21	0020376	SPRING & SCRAPER ASSY	1

"BUTCHER BOY" SA20 BAND SAW PART MANUAL

(MANUFACTURED BY AMERICAN MEAT EQUIPMENT LLC.)

S/N 99010003 TO 99010018 & S/N 00J0049 - ON

UPPER WHEEL ASSY



ITEM#	PART#	DESCRIPTION	QTY
1	0010770	NUT & WASHER FOR SHAFT	1
2	0010030	BEARING RETAINER	1
3	0010127	GASKET	2
4	0090400	RUBBER SEAL	1
5	0010018	SHAFT W/ WASHER & NUT	1
6	0090302	BEARING	2
7	0010258	SPACER	1

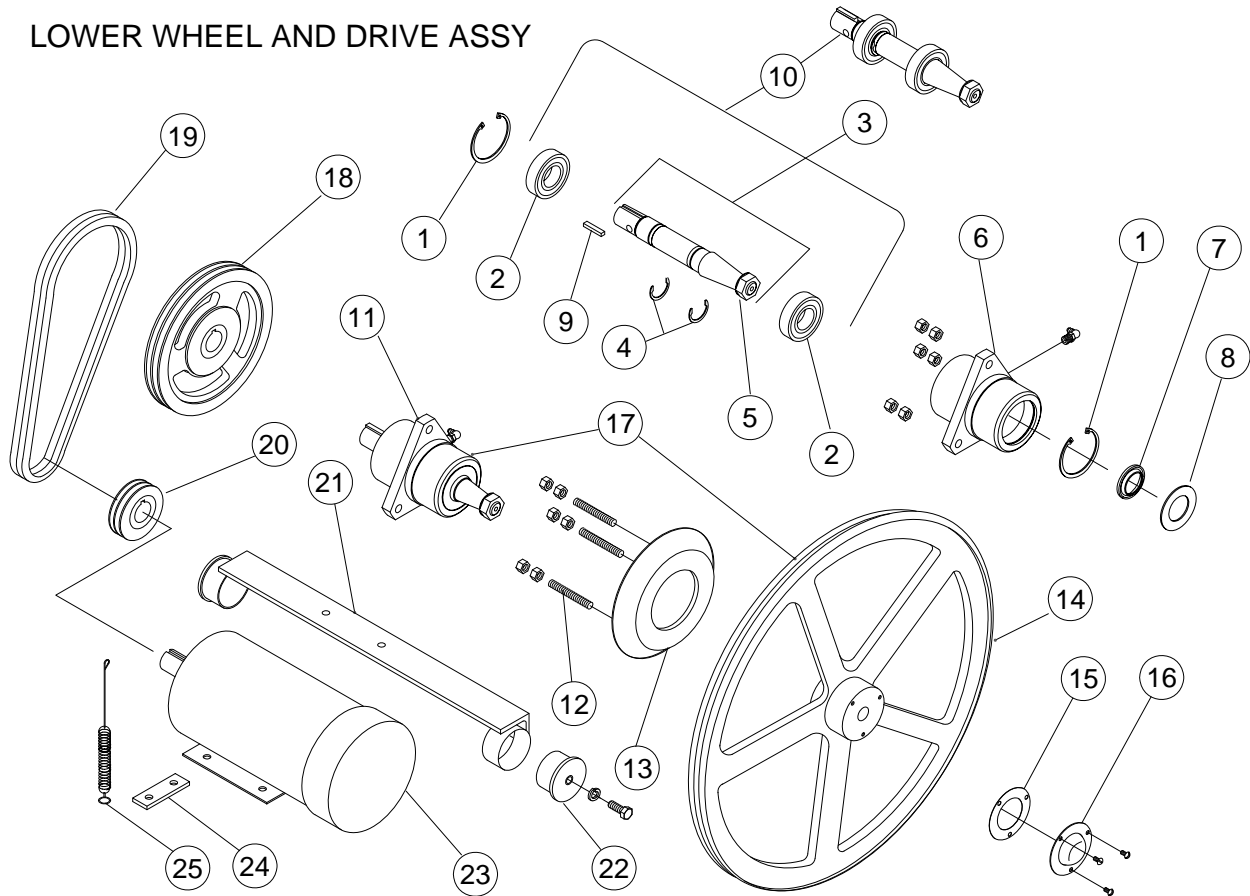
ITEM#	PART#	DESCRIPTION	QTY
8	0010128	SPECIAL WASHER & SCREW	1
9	0010031	HUB CAP	1
10	0020156	SA20 UPPER WHEEL 5/8	1
11	0010574	UPPER SHAFT & BEARING ASSY	1
12	0020255	SA20 UPPER WHEEL ASSY 5/8	1
12	0020337	SA20 RH UPPER WHEEL & SPINDLE ASSY	1
12	0030338	SA20 LH UPPER WHEEL & SPINDLE ASSY	1

"BUTCHER BOY" SA20 BAND SAW PART MANUAL

(MANUFACTURED BY AMERICAN MEAT EQUIPMENT LLC.)

S/N 99010003 TO 99010018 & S/N 00J0049 - ON

LOWER WHEEL AND DRIVE ASSY



ITEM#	PART#	DESCRIPTION	QTY
1	0090200	RETAINING RING (LARGE)	2
2	0090300	BEARING	2
3	0010023	SHAFT ASSY W/ WASH, & NUT	1
4	0090201	RETAINING RING (SMALL)	2
5	0010770	NUT & WASHER FOR SHAFT	1
6	0020108	BEARING HOUSING	1
7	0090400	RUBBER SEAL	1
8	0010029	SPECIAL WASHER	1
9	0059247-8	KEY-SHAFT	1
10	0010575	LOWER SHAFT & BEARING ASSY	1
11	0020254	LOWER SHAFT & HOUSING ASSY	1
12	0010078	STUD	3
13	0010077	BEARING HOUSING SUPPORT	1
14	0020157	LOWER WHEEL	1
15	0010127	GASKET	1

* STD SPEED 3,600 FPM BEFORE S/N 04F0341

ITEM#	PART#	DESCRIPTION	QTY
16	0010031	HUB CAP	1
17	0020274	LOWER WHEEL & HOUSING ASSY	1
18	0020892	DRIVEN PULLEY AND HUB ASSY(STD)	1
18	0020891	DRIVEN PULLEY AND HUB ASSY(HI)	1
19	0090521	V-BELTS (MATCH) (STD)	2
19	0090503	V-BELTS (MATCH) (HI)	2
20	0020890	MOTOR PULLEY AND HUB ASSY	1
20	0020895	MOTOR PULLEY AND HUB ASSY *	1
21	0020233S	MOTOR MOUNT	** 1
22	0010118	RUBBER MOUNT	1
23	0092169	3HP MOTOR 3 PHASE 230V-460V	1
23	0092193	5HP MOTOR 3 PHASE 230V-460V	1
23	0092194	5HP MOTOR 3 PHASE 575V	1
24	0020243S	TORQUE LIMIT BRACKET	1
25	0020228	MOTOR TORQUE SPRING ASSY	1

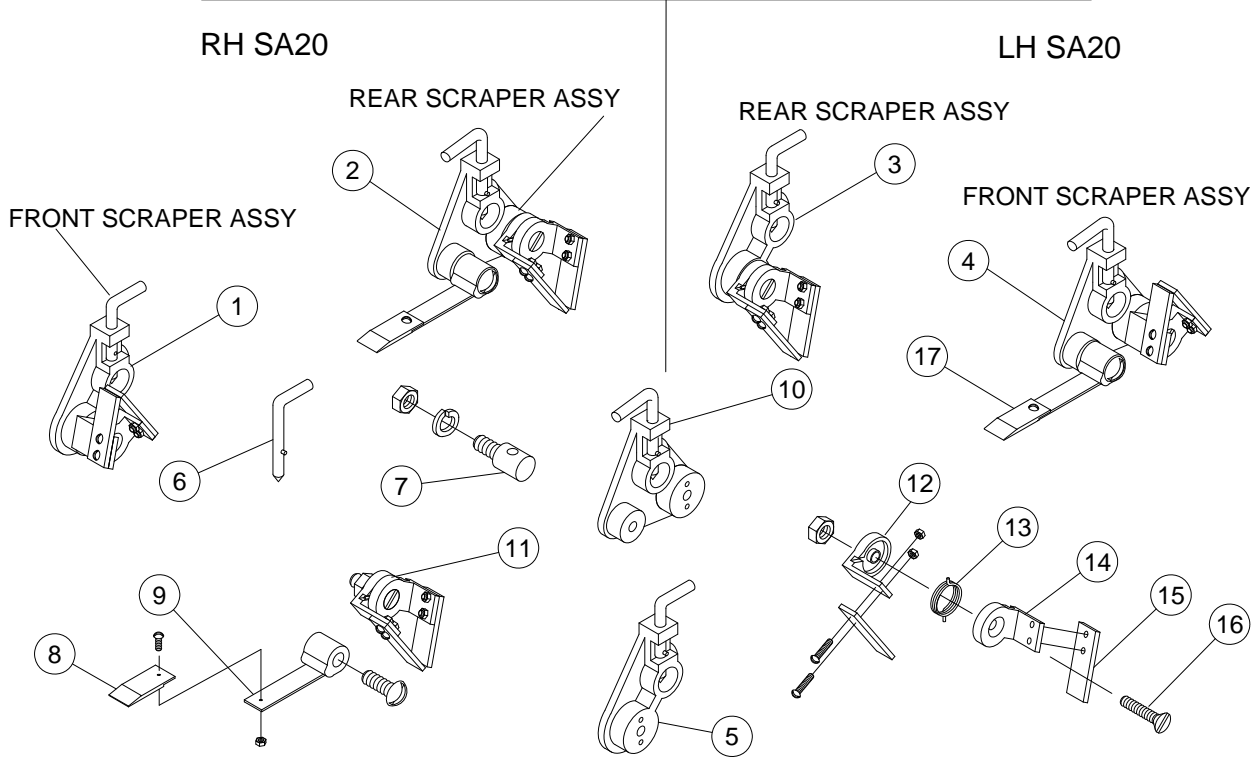
** STD SPEED 4,000 FPM S/N 04F0341-ON

"BUTCHER BOY" SA20 BAND SAW PART MANUAL

(MANUFACTURED BY AMERICAN MEAT EQUIPMENT LLC.)

S/N 99010003 TO 99010018 & S/N 00J0049 - ON

FRONT & REAR SCRAPER ASSY FOR RH & LH SA20 SAWS



ITEM#	PART#	DESCRIPTION	QTY
1	0020679	FRONT SCRAPER ASSY RH (FIBER)	1
2	0020225	REAR SCRAPER ASSY RH (FIBER)	1
3	0020726	REAR SCRAPER ASSY LH (FIBER)	1
4	0020725	FRONT SCRAPER ASSY LH (FIBER)	1
5	0020678	SCRAPER MOUNT & LOCK	1
6	0020246	LOCKING PIN	2
7	0020055	SCRAPER HOLDING STUD	2
8	0020035	FIBER SCRAPER	2
9	0010277	SCRAPER SPRING	2
10	0020247	SCRAPER MOUNT & LOCK	1
11	0010460	BLADE SCRAPER ASSY-FIBER	2
11	0010464	BLADE SCRAPER ASSY-S.S.	IF REQ
12	0010301	SCRAPER HOLDER	2
13	0010199	SPRING-SCRAPER ASSY	2
14	0010302	SCRAPER HOLDER	2
15	0010300	SCRAPER-FIBER	4
15	0010310	SCRAPER-STAINLESS ST'L	IF REQ
16	0010792	FLAT HD. SCREW & NUT ASSY	2
17	0020376	SPRING & SCRAPER ASSY	1

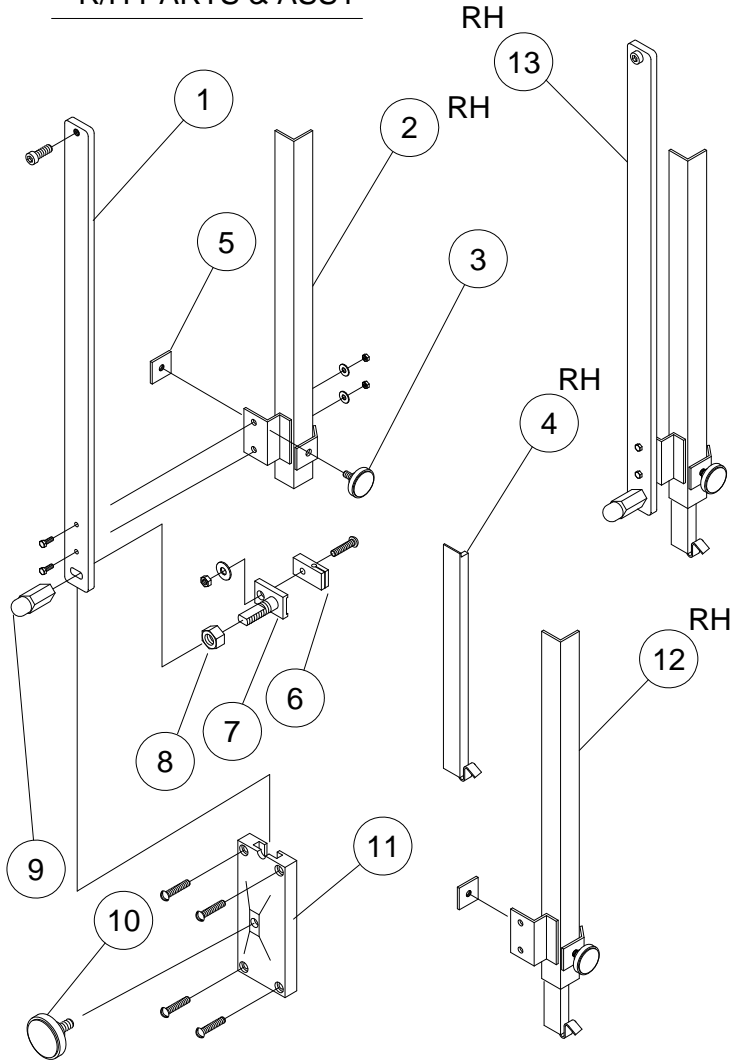
"BUTCHER BOY" SA20 BAND SAW PART MANUAL

(MANUFACTURED BY AMERICAN MEAT EQUIPMENT LLC.)

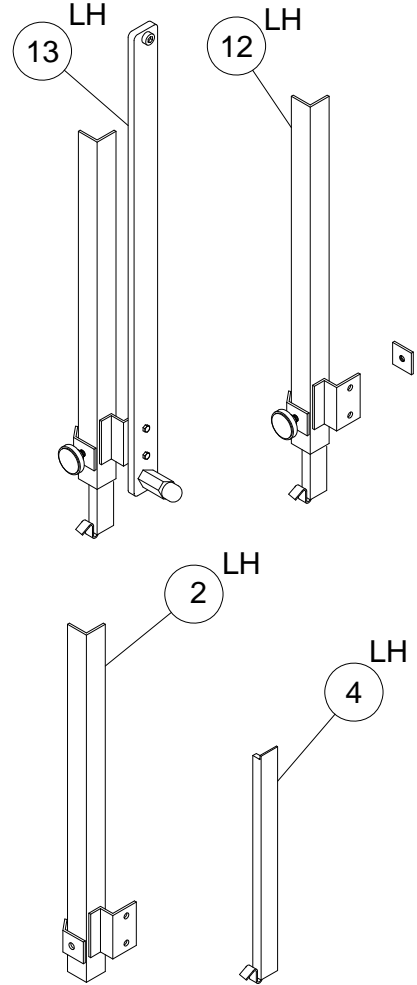
S/N 99010003 TO 99010018 & S/N 00J0049 - ON

COMPLETE GUARD ASSY RH & LH

R/H PARTS & ASSY



L/H PARTS & ASSYS



ITEM#	PART#	DESCRIPTION	QTY
1	00160695	BLADE SUPPORT ADJ BAR	1
2	0020624	BLADE GUARD ASSY LH	1
2	00160700	BLADE GUARD ASSY RH	1
3	0095084S	KNOB-SS THREADED STEM	1
4	00160665	EXTENSION GUARD-RH	1
4	00160664	EXTENSION GUARD	1
5	0010714	CATCH	1
6	0020785	BLADE GUIDE .030 CARBIDE	1
6	0020786	BLADE GUIDE .018 CARBIDE	1

ITEM#	PART#	DESCRIPTION	QTY
7	0020782S	HOLDER-SS	1
8	0020788S	LOCK NUT-SS	1
9	0020789S	HAND GRIP ROUND NUT-SS	1
10	0090600	BAR SAFETY LOCK KNOB	1
11	0020779	BLADE SUPPORT BAR GUIDE	1
12	00160701	BLADE GUARD ASSY W/ EXT RH	1
12	0020921	BLADE GUARD ASSY W/ EXT LH	1
13	00160705	RH BAR GUIDE ASSY	1
13	0020770	LH BAR GUIDE ASSY	1

"BUTCHER BOY" SA20 BAND SAW PART MANUAL

(MANUFACTURED BY AMERICAN MEAT EQUIPMENT LLC.)

S/N 99010003 TO 99010018 & S/N 00J0049 - ON

NOTE: NOT USED ON FIXED AND DOUBLE ROLLER TABLES

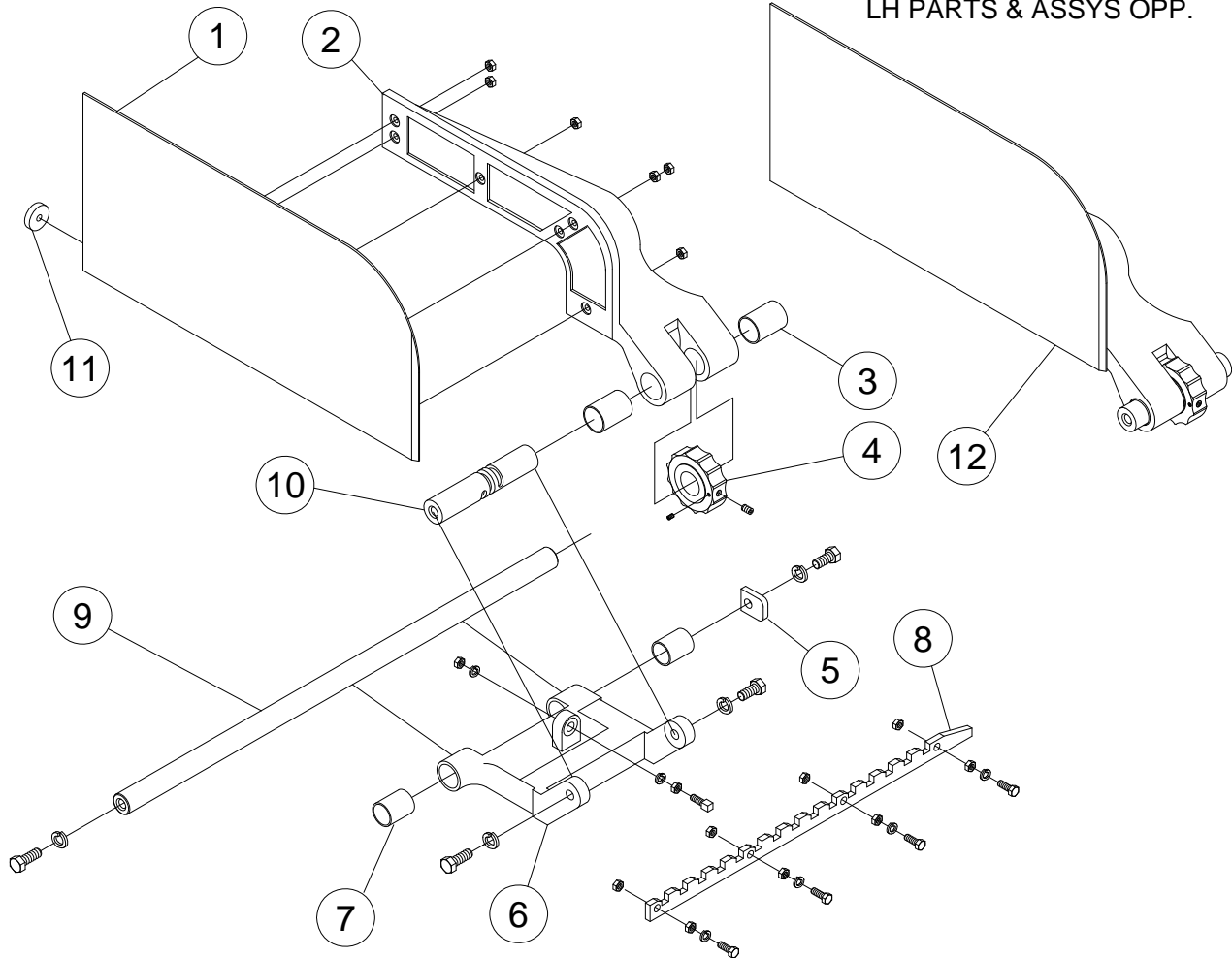
0020692 COMPLETE RH THICKNESS GA. ASSY W/ROD & RATCHET LOCK (137B)

0020693 COMPLETE LH THICKNESS GA. ASSY W/ROD & RATCHET LOCK (137B)

0020342 RH THICKNESS GA. ASSY W/ROD (137A)

0020343 LH THICKNESS GA. ASSY W/ROD (137A)

RH PARTS & ASSYS SHOWN
LH PARTS & ASSYS OPP.



ITEM#.	PART#	DESCRIPTION	QTY
1	0020687	RH THICKNESS GA. PL. ASSY (050C)	1
1	0020688	LH THICKNESS GA. PL. ASSY (050C)	1
2	0020211	RH THICKNESS GA. ARM (050B)	1
2	0020570	LH THICKNESS GA. ARM (050B)	1
3	0090765	BUSHING-THICKNESS GA. ARM	1
4	0020896	GA. HAND WHEEL & SET SCR. (051A)	1
5	0020241	LUG GA. STOP (0055)	1
6	0020216	THICKNESS GA. SLIDE BRKT. (055A)	1

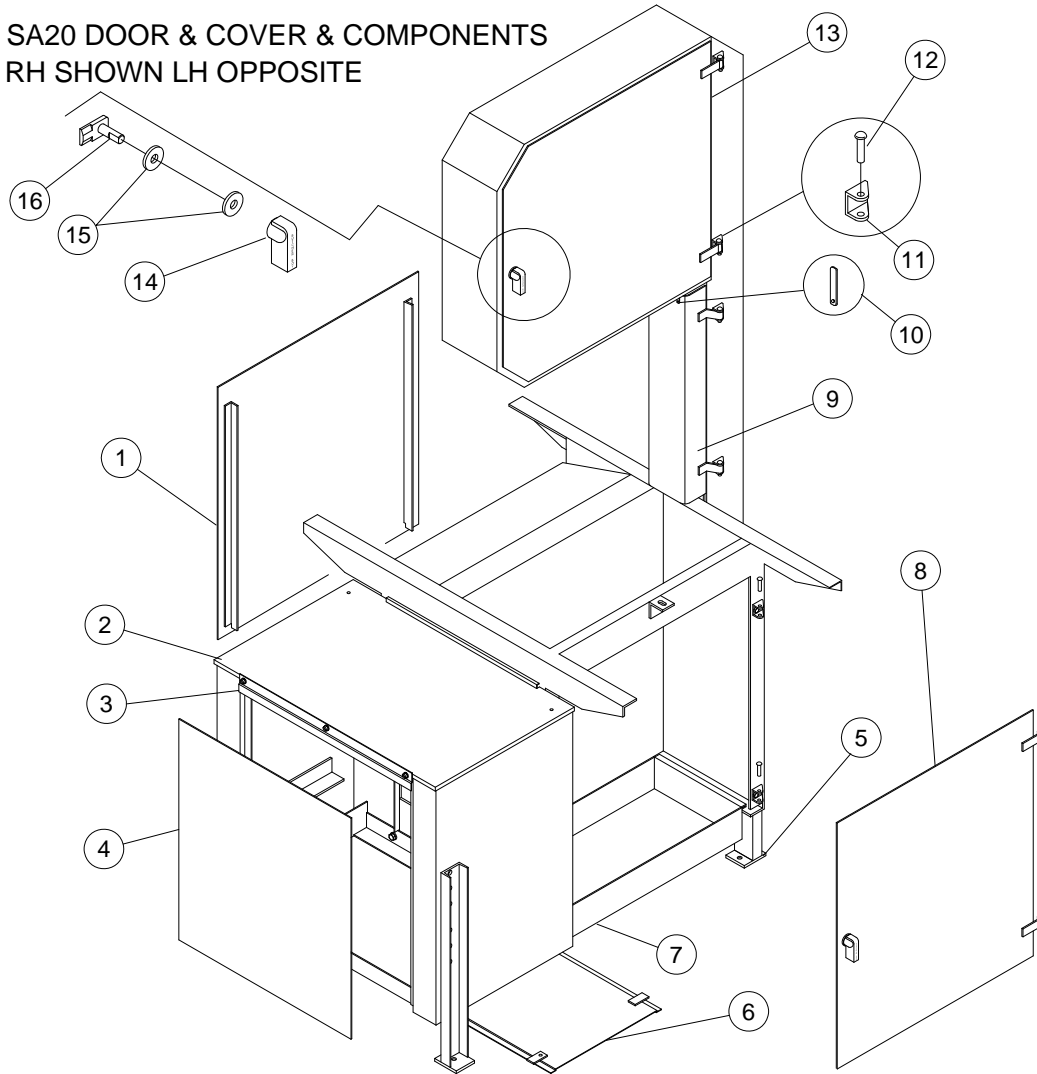
ITEM#.	PART#	DESCRIPTION	QTY
7	0090756	BUSHING-GA SLIDE BRKT.	1
8	0020215	RATCHET LOCK-THICK. GA. (054A)	1
9	0020217	SLIDE ROD WITH BOLTS (056A)	1
10	0020213	GAUGE SPINDLE (052A)	1
11	0010297	ROLLER WHEEL (053A)	1
12	0020340	RH THICK. GA. PL. & ARM ASSY (0137)	1
12	0020341	LH THICK. GA. PL. & ARM ASSY (0137)	1

PART MANUAL FOR "BUTCHER BOY" SA20 BAND SAW

S/N 99010003 TO 99010018 & S/N 00J0049 - ON

(MANUFACTURED BY AMERICAN MEAT EQUIPMENT LLC.)

SA20 DOOR & COVER & COMPONENTS
RH SHOWN LH OPPOSITE



ITEM#	PART#	DESCRIPTION	QTY
1	0020706	SIDE COVER ASSY	1
2	0020844	TOP COVER-MOTOR CAB.	1
3	0020621	CATCH-TOP MOTOR COVER	1
4	0020842	FRONT COVER-MOTOR CAB.	1
5	0020772	LEG ASSY	4
6	0020684	BOTTOM COVER-MOTOR CAB.	1
7	0020154	BONE BOX	1
8	0020712	LOWER DOOR ASSY	1
9	0020959	RH COLUMN DOOR ASSY S/N 99010003-ON	1

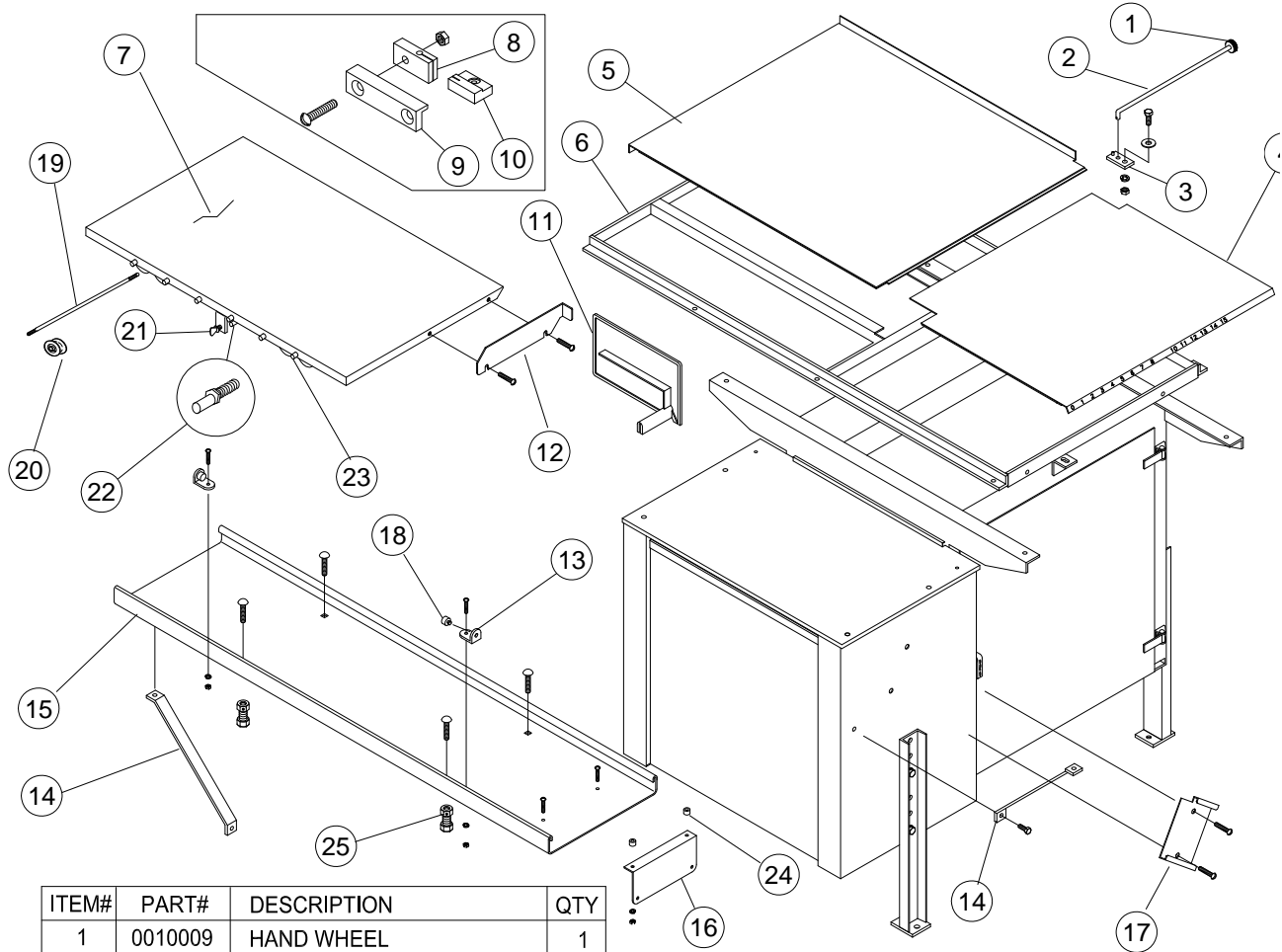
ITEM#	PART#	DESCRIPTION	QTY
9	0020960	LH COLUMN DOOR ASSY S/N 99010003-ON	1
10	0020703	LATCH-COLUMN DOOR (BEFORE S/N 99010003)	1
11	0010571	HINGE HALF	6
12	00160672	HINGE PIN	6
13	0020695	UPPER DOOR ASSY-RH	1
13	0020696	UPPER DOOR ASSY-LH	1
14	0010401	DOOR HANDLE	2
15	0090602	WASHER-SPACER	2
16	0010650	DOOR LATCH	2

PART MANUAL FOR "BUTCHER BOY" SA20 BAND SAW

S/N 99010003 TO 99010018 & S/N 00J0049 - ON

(MANUFACTURED BY AMERICAN MEAT EQUIPMENT LLC.)

TABLES & SUPPORTS FOR STANDARD RH & LH SA20 (RH SHOWN)



ITEM#	PART#	DESCRIPTION	QTY
1	0010009	HAND WHEEL	1
2	0020214	TABLE LOCK HANDLE ASSY	1
3	0020220	TABLE LOCK CATCH-RH	1
3	0020197	TABLE LOCK CATCH-LH	1
4	0020553	REMOVABLE TABLE-RH	1
4	0020554	REMOVABLE TABLE-LH	1
5	0020549	STATIONARY TABLE-RH	1
5	0020550	STATIONARY TABLE-LH	1
6	0020545	TABLE FRAME-LH	1
6	0020546	TABLE FRAME-RH	1
7	0020022	ROLLER TABLE-LH	1
7	0020025	ROLLER TABLE-RH	1
8	0020785	BLADE GUIDE (FOR .022)	1
8	0020786	BLADE GUIDE (FOR .016)	1
9	0020222	BLADE GUIDE SPACER-RH	1
9	0020251	BLADE GUIDE SPACER-LH	1
10	0020143	FIBER BLADE BLOCK	1
11	0010208	SHORT CUT PL-RH	1
11	0020815	SHORT CUT PL-LH	1

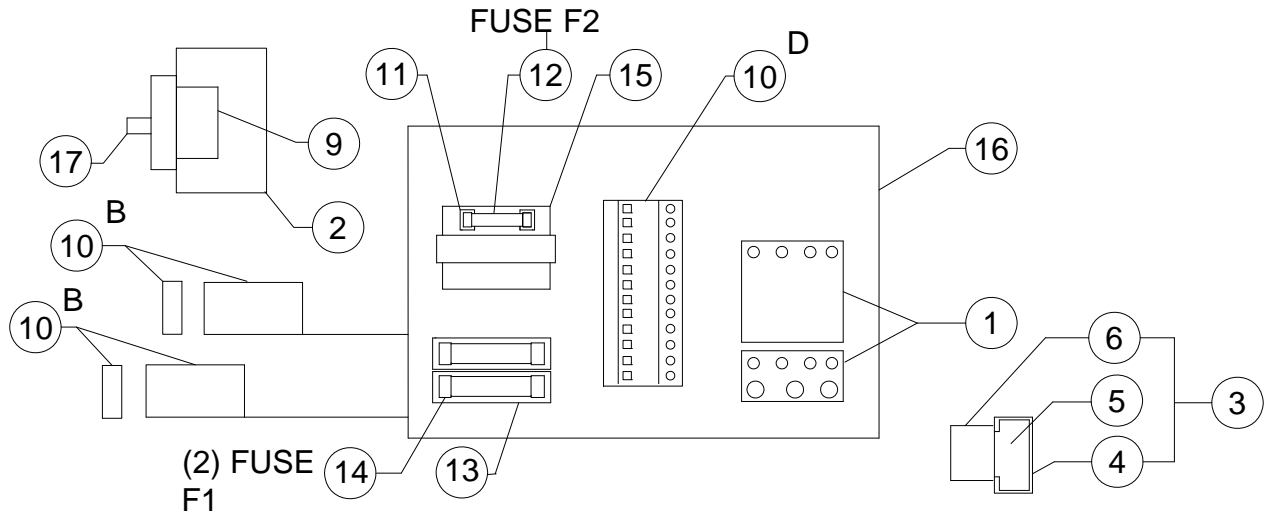
ITEM#	PART#	DESCRIPTION	QTY
12	20036	UPRIGHT PLATE-RH	1
12	20336	UPRIGHT PLATE-LH	1
13	10037	TABLE STOP ASSY	1
14	20339	SS TRACK BRACE	2
15	20709	TABLE TRACK-LH	1
15	20710	TABLE TRACK-RH	1
16	20665	GUIDE BRACKET	1
17	10067	PUSHER PL. HOLDER	1
18	90612	RUBBER BUMPER	2
19	20029	AXLE SPINDLE	2
20	10068	GROOVE WHEEL	8
21	TS-21-12-SS	THUMB SCREW	1
22	10098S	TRACK HOLDING PIN	3
23	10016	STUD	6
24	20849	SPACER	2
25	20879	TRACK SPACER ASSY	4

PART MANUAL FOR "BUTCHER BOY" SA20 BAND SAW

S/N 99010003 TO 99010018 & S/N 00J0049 - ON

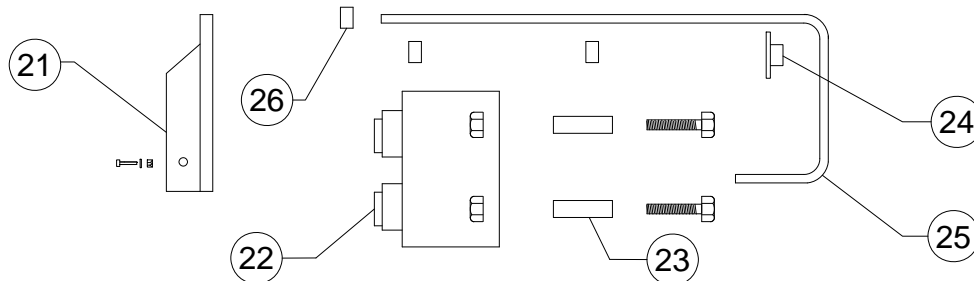
(MANUFACTURED BY AMERICAN MEAT EQUIPMENT LLC.)

ELECTRICAL COMPONENTS (S/N 03C0242-ON) CONTACT FACTORY FOR EARLIER S/N'S)



ITEM	PART#	DESCRIPTION	QTY
1	0093999-109	CONTACTOR & O/L (3HP-208-230V-3PH) (5HP-460V-3PH)	1
1	0093999-111	CONTACTOR & O/L (3HP-460-575V-3PH)	1
1	0093999-108	CONTACTOR & O/L (5HP-575V-3PH)	1
2	0093999-135	ENCLOSURE (SHUT-OFF SWITCH)	1
3	0093999-030	START BUTTON ASSY	1
4	0093999-029	RUBBER BOOT	1
5	0093999-031	PUSH BUTTON	1
6	0093999-026	CONTACT BLOCK	1
9	0093999-023	DISCONNECT SWITCH	1

ITEM	PART#	DESCRIPTION	USE
10B	0093999-317	READ & MAG (10C) UPPER DOOR	2
10D	0093999-316	EVALUATION RELAY	1
11	0093999-096	FUSE CLIPS	1
11	0093999-032	FUSE CLIPS (575V)	1
11	0093999-032	FUSE CLIPS (575V)	1
12	0093999-018	FUSE F2 (2.8A)	1
13	0093999-024	FUSE HOLDER (PRIMARY)	1
14	0093999-025	FUSE FI 3/10A (230v)	2
14	0093999-017	FUSE FI 15/100A (460-575V)	2
15	0093999-302	TRANSFORMER (208-460/24)	1
15	0093999-068	TRANSFORMER (575V/24)	1
16	0093999-190	ENCLOSURE	1
17	0093999-055	ACTUATORS	1



ITEM	PART#	DESCRIPTION	QTY
21	0010911	SWITCH ROCKER	1
22	0093279	PUSH BUTTON ASM	1
23	0010909	SPACER	2

ITEM	PART#	DESCRIPTION	USE
24	0010915	COLLAR-WASHER	1
25	0010912	SWITCH HANDLE	1
26	0090606	COLLAR	3

BUTCHER BOY SA20

ELECTRICAL

